



THE G-TOUCH®  
SAPPHIRE  
INTERACTIVE  
DISPLAY

Part of the Gem Series.



THE HOME OF INNOVATION



## INTRODUCTION

The all-new G-Touch® Sapphire now with 4K technology! Designed for the digital classroom and offices, the Sapphire is an easy to use but powerful solution to elevate engagement and empower presenters. As a leading manufacturer of touchscreens, we work closely with many institutions to establish their needs and requirements.

All of our G-Touch® Interactive Displays are Windows and Mac compatible. Utilising the latest anti-glare technology, the G-Touch® Sapphire ensures that content is always visible in any environment and from any seat in the room. Crystal clear audio via the front facing speakers is ideal when incorporating video presentations or remote sessions.

# CONNECTIVITY VARIOUS INPUTS AND OUTPUTS



Buttons and connection ports are now front facing for easy access, and side facing for a neater and more permanent option, allowing devices to be connected through a range of multiple inputs; this makes it ideal for a variation between permanent and visiting staff and guests.

A multitude of different devices can be connected through a range of inputs and outputs, allowing the G-Touch® Sapphire to easily integrate with all standard technology already in the classroom and workplaces.



# G-TOUCH® SAPPHIRE FEATURES



## Easy to use

Simply plug in a laptop or computer and you are ready to go! No additional drivers or peripherals are needed.



## Multi Touch

With multi-touch technology several people are able to work and collaborate on the screen at once. This allows you to also benefit from multi touch software.



## OPS Slot

All G-Touch® models have the option to add a built-in PC. Our simple 'slide and secure' fitting options allow for easy upgrades.



## Anti-Glare

All of our G-Touch® screens have the latest anti-glare technology. This coupled with the brightness of our LED panel enable content to be viewed in any environment.



## Front Facing Speakers

Crystal clear audio via the front facing speakers is ideal when incorporating video presentations or remote sessions.



## Spark II Software

The ultimate classroom presentation software designed for ease of use. Free for all teachers and students with no annual subscription.



## Connection & Bezels

Easily accessible connection ports and 4 section bezels to enable on site repairs without having to return to base.

# SERVICES

## MDM GENEЕ CONTROL

Manage and control all of your G-Touch® screens through a single, cloud-based platform, enabling complex operations and tasks to be completed in a refreshingly simple manner.

- Control multiple devices at once.
- Ability to share messages.
- Updating software.



## WARRANTY & IN HOUSE TECHNICAL TEAM



The G-Touch® Sapphire comes with 5 Year Warranty.

Our Genee technical team are there to assist on any problems you may have with your Genee products, within your warranty period or outside the warranty period. Genee ensures to provide the ultimate customer experience, which is why Genee is one of the few AV manufacturers that employs its own dedicated internal technical team, rather than sub-contracting to a third party.

You can be rest assured when it comes to our hardware support, it will be a Genee qualified engineer who will provide the best customer service and support.

## TRAINING

Our training programmes are delivered by a fully qualified, experienced classroom teacher. This will enable you to fully utilise your new technology to enhance learning and presentations ultimately increasing engagement levels.

This programme is designed for skills training, building on the content of each introductory training session. Receive your first introductory training session for free when you purchase a G-Touch® display.



# SOFTWARE



## SPARK II

SPARK II is an interactive screen software. Designed to work on both interactive whiteboards and LED touchscreens, it provides a presenter or teacher with an infinite canvas area. As well as importing documents and images from local files or the internet, this software will run over the top of other applications allowing you to annotate, highlight and manipulate objects. It comes with a range

of tools such as a Compass, Protractor, Ruler etc. It also has Science and Maths Content built within it. SPARK II also has the ability to import Smart NoteBook Files meaning teachers do not have to recreate their lessons! SPARK II is available for FREE on all G-Touch® screens and on all teacher and student devices.

Watch the SPARK II product video here:

<https://www.youtube.com/watch?v=pVfQpiJeBTE>



## LEARN HUB

Designed specifically around multi-user gamification, Learn-Hub is a cloud-based software that includes nine fully adaptable learning activities. Activities are designed for Early Years & Primary students and can be customised and configured by the teacher to meet any level or topic of work. All activities are fully customisable with a simple interface to allow teachers to take full control. Teachers can also save, print and record student results.

Up to 4 students at the same time can utilise the activities competitively and when used on an interactive screen (such as G-Touch® Tables) the full multi-touch capabilities are revealed.

Find out more here:

<https://www.youtube.com/watch?v=GxRkfa8PrkU>





## PROJECT FLOW

Project Flow is a cloud-based lesson delivery tool like no other; allowing presentations, activities, questions and work to be sent directly to student devices. It offers automated differentiation and instant feedback on student performance to the teacher.

Teachers need to ensure that all students are performing to the best of their abilities and that lesson content is targeted to students' individual needs and learning styles. Not only that, but ensuring that students have understood all concepts before moving onto the next, is crucial to embed the learning. If the class contains individuals who have not fully grasped a particular concept, teachers need to be able to dedicate time to assisting and helping these students.



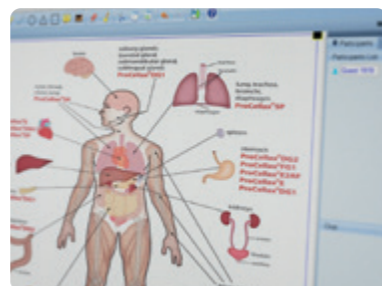
Watch the Project Flow product video here:  
<https://www.youtube.com/watch?v=pVfQpiJeBTE>



CUBE SHARE

## CUBE SHARE

A canvas sharing software allows 'presenters' to create a meeting or lesson and invite participants to attend via a URL weblink. With the options to view the same canvas, share documents / images and collaborate using the software's annotation tools and the built-in chat facility.



There is no limit on the amount of people that can join in a session.

Compatible with Sapphire Touchscreen



Microsoft Teams



Zoom



Google Workspace

# APP SPOTLIGHT



## DARTS MATHS

Darts Maths is an interactive educational software, which helps children to acquire basic mathematical knowledge and develop their abilities, through a digital dartboard.

The aim of this programme is to encourage interactive learning in a practical and stress-free educational environment. Applicable to use with children in different stages of development; it does not differentiate, provides equal opportunities and focuses on unique and individual improvement.

Students do not experience failure, as the programme does not include any kind of evaluation. Problems and tasks can be re-done and difficulty levels are variable, which provides new challenges consecutively for students.



## KIDLOLAND

KidloLand is an award-winning learning program for kids (1-8 years). Discover 3000+ educational songs, games, stories, nursery rhymes & activities about Early Learning, Math, Reading, Writing, Coding and more! Your kids will learn and develop new skills every day. Join over 1 Million happy families worldwide!

This app is completely kid-friendly without any ads. No worries!



## WHAT IS INCLUDED IN THE BOX?

Inside the box includes everything you need to get going!

		
<b>1x HDMI</b>	<b>1x VGA</b>	<b>1x USB</b>
		
<b>1x 3.5mm Audio</b>	<b>1x Power Cable</b>	<b>1x Remote Control</b>
		
<b>1x Magnetic Pen</b>	<b>1x Wireless Dongle</b>	<b>1x European Power Cable</b>
		
<b>1x Customer Care Pack</b>	<b>1x Warranty Registration</b>	

The solution that fits your needs. Depending on your requirements we have a range of accessories that are interoperable with our G-Touch® Range.

## G-TOUCH® ACCESSORIES

### GENEE VISION VISUALISERS

Have you ever wondered whether you can take your presentation to the next level? Or how you can display your demonstration, experiment or printed document on a larger scale? With Genee Visualisers you can make a strong impact on your audience, adding visual content to enhance your

presentation by showing your content – in almost microscopic detail. Connect your visualiser to a PC and use Genee Toolbar software to annotate, take stills, zoom and more. You can also do this wirelessly with the new Wireless Visualiser.



**NEW WIRELESS VERSION!**

**GV50UHD 5G**

GENEE Vision®

## OPS UNIT

OPS (Open Pluggable Specification) enables the ability to upgrade your existing touchscreens to your individual requirements, while helping to future-proof technology investments. The OPS unit can accommodate further, as it can be interchangeable with other devices. You can simply just plug in the OPS unit and experience all the benefits of working in a PC environment.



Available as i5, i7 and lots of memory and storage options to fit your needs.

## STANDS AND WALL MOUNTS

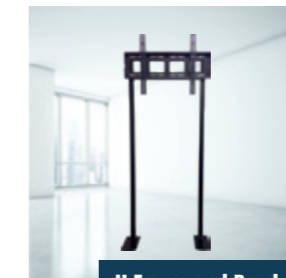
Designed to provide the perfect means for displaying your interactive touchscreen, whether in a classroom, training centre, or board room, we offer a comprehensive range of stands, trolleys and wall mounts. The Genee range is designed to match your needs and your environment within your budget. Our stands, wall mounts and trolleys have been selected to provide a solution for all G-Touch® Interactive Touchscreens, but are also compatible with other branded screens. Whether you would like your screen to be wall-mounted and placed in a permanent location, or to be on a trolley so that it can be moved around the room or the building, we have a mounting solution that will work for you.

### Genee Standard Mounting



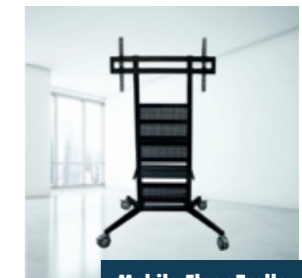
Wall Mount

STA050020



H Frame and Bracket

STA060020



Mobile Floor Trolley

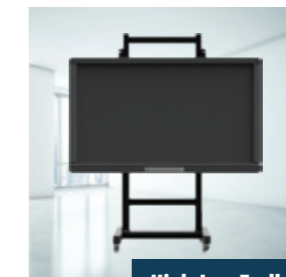
STA080010

### Genee Manual High-Low Range Stand and Trolley



High-Low Stand

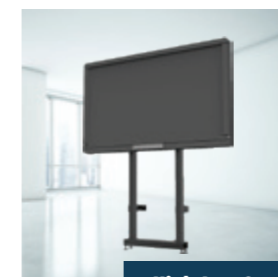
STA210110



High-Low Trolley

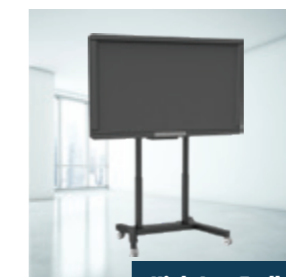
STA220120

### Genee Electric High-Low Range Stand and Trolley



High-Low Stand

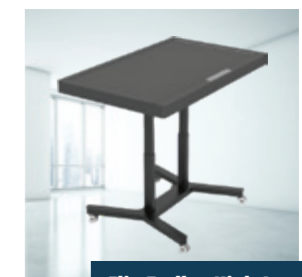
STA210020



High-Low Trolley

STA220020

### Genee Mobile Flip Trolley (Allows horizontal and vertical tilt)



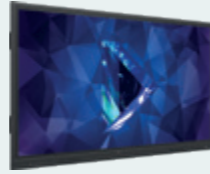
Flip Trolley High-Low

STA110020

See the full range here:

<http://genee-group.com/wall-mounts-trolley-and-stands/>

# SPECIFICATIONS



Model Name	G-Touch® Sapphire
Product Code	TOU040010
Active Screen Size (inch)	65"
Display Backlight	LED
Display Area (Horizontal x Vertical)	1428.5 x 803.5mm
Display Ratio	16:9
Native Resolution	3840 x 2160 Pixel (4K)
Display Colours	8bit+FRC (1.07 billion colour)
LCD Brightness (Typical, after cover class)	350cd/m2
Contrast Ratio (Typical)	4000:1
Response Time	8ms
Refresh Rate	60 Hz
Viewing Angle	178°
Life time (working hours/day)	30,000 Hours Typ. (Standard) 50,000 Hours Typ. (ECO mode)
Power Consumption (w/o OPS)	Maximum <250W Standby Mode ≤0.5W
Working Voltage	AC 100-240V, 50/60Hz
Display Orientation	Landscape
Surface Treatment	Anti Glare (7H)
Touch Resolution	32767 x 32767
Cover Glass Thickness	4mm
Touch Surface Hardness (Mohs)	7
Touch Sensor	Infrared Touch
Touch Points	20 Point
OS Support	Windows, Mac
Operating System	None-Android
Media Interface	USB-A
Speaker Position	Forward / Front Facing
Speaker Rated Impedance	8Ω
Speaker Frequency Response	200Hz-20kHz

Model Name	G-Touch® Sapphire
Speaker Maximum Power Output	15W x2 Front Facing
Working Temperature/Humidity	0° to 40°C / 20% ~ 80% non-condensing
Installation Method (optional)	Wall-mounted / Floor Stand
Outline Dimension (without wall mount bracket thickness)	1546 x 944 x 96mm
Packing Dimension	1670 x 1056 x 221mm
Net Weight	45kg
Gross Weight	65kg
Package Contents	Display, HDMI cable, Power cable, USB cable, Remote control with batteries, Stylus x1, User Guide, VGA cable, Audio cable & Warranty Registration Document.
VESA Mount installation position	600 x 400mm
OPS PC	Available
Software Available	SPARK II, Project Flow (60 DayTrial)
Warranty	5 Year Warranty subject to registration within 28 days, terms and conditions apply.

PORTS	
Front Interface Inputs	USB 3.0 for OPS x2, Touch x1, HDMI x1 & MIC x1
AV Inputs	HDMI 1.4 & 2.0 (4K@30Hz) x3, (2.0 x2 in rear side & 1.4 x1 in front), RGB / VGA (1920 x 1080 @ 60Hz) x1, PC audio (3.5 mm) x1 YPbPr x1 MIC(Microphone) x1
AV Outputs	Earphone Out x1
Other	RS232 x1 Intel Standard OPS Slot support 4K@60HZ USB Type A (3.0) x2, (2.0) x1 USB Type B for Touch x2
Multimedia File Formats Support	Image: JPEG, BMP, PNG Video: MPEG2, MPEG4, H264, HEVC (H.265) (Support 1080P, 4K HD Decoding) (4K video not supported) Audio: MP3, M4A, (AAC)





E&OE.Call us now to find out more.

[www.genee-group.com](http://www.genee-group.com) | +44 (0)1902 390 862 | [enquiries@genee-group.com](mailto:enquiries@genee-group.com)

 [@GeneeGroup](#)  [@GeneeGroup](#)  [company/genee-group](#)  [@GeneeGroup](#)